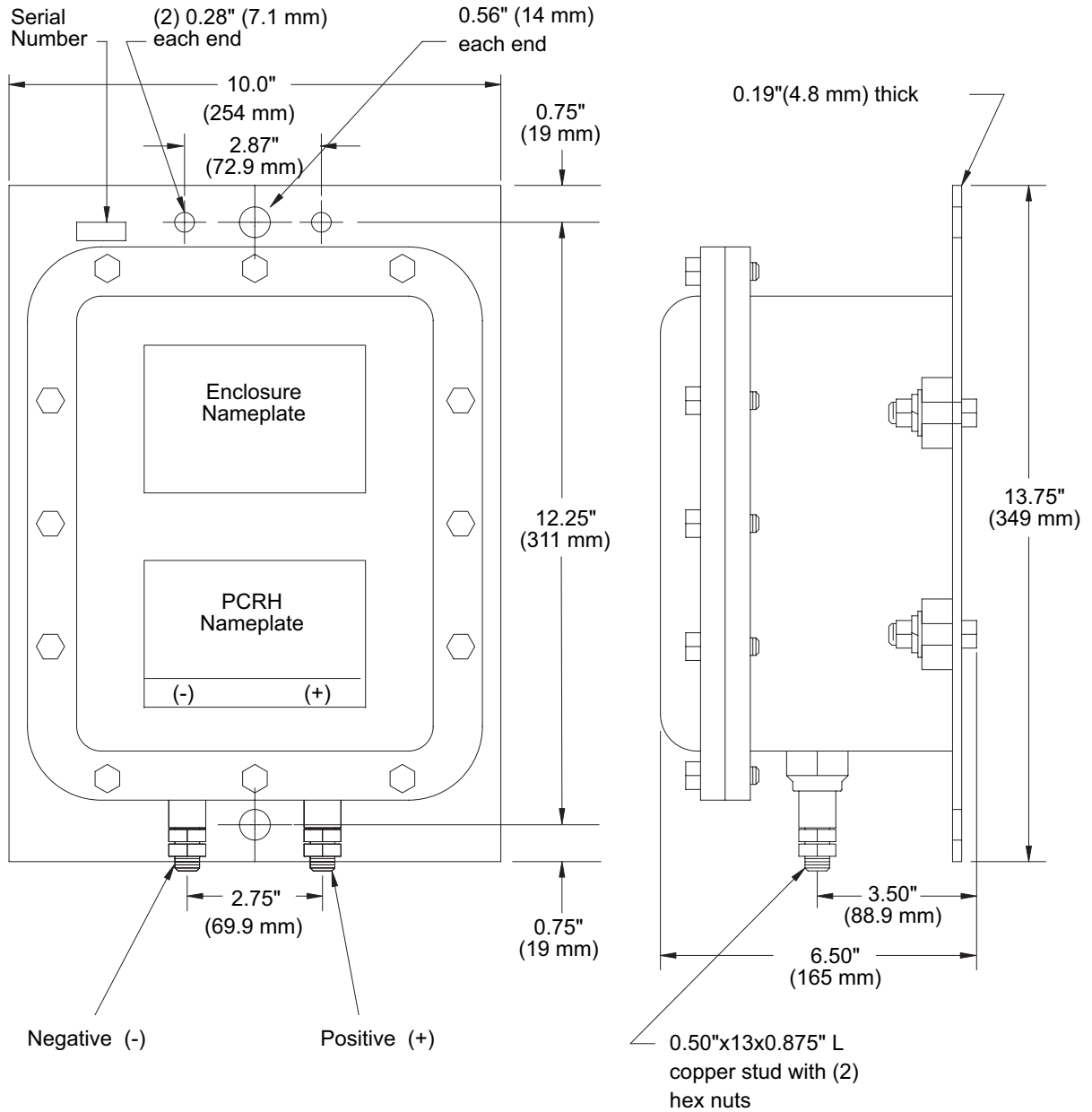
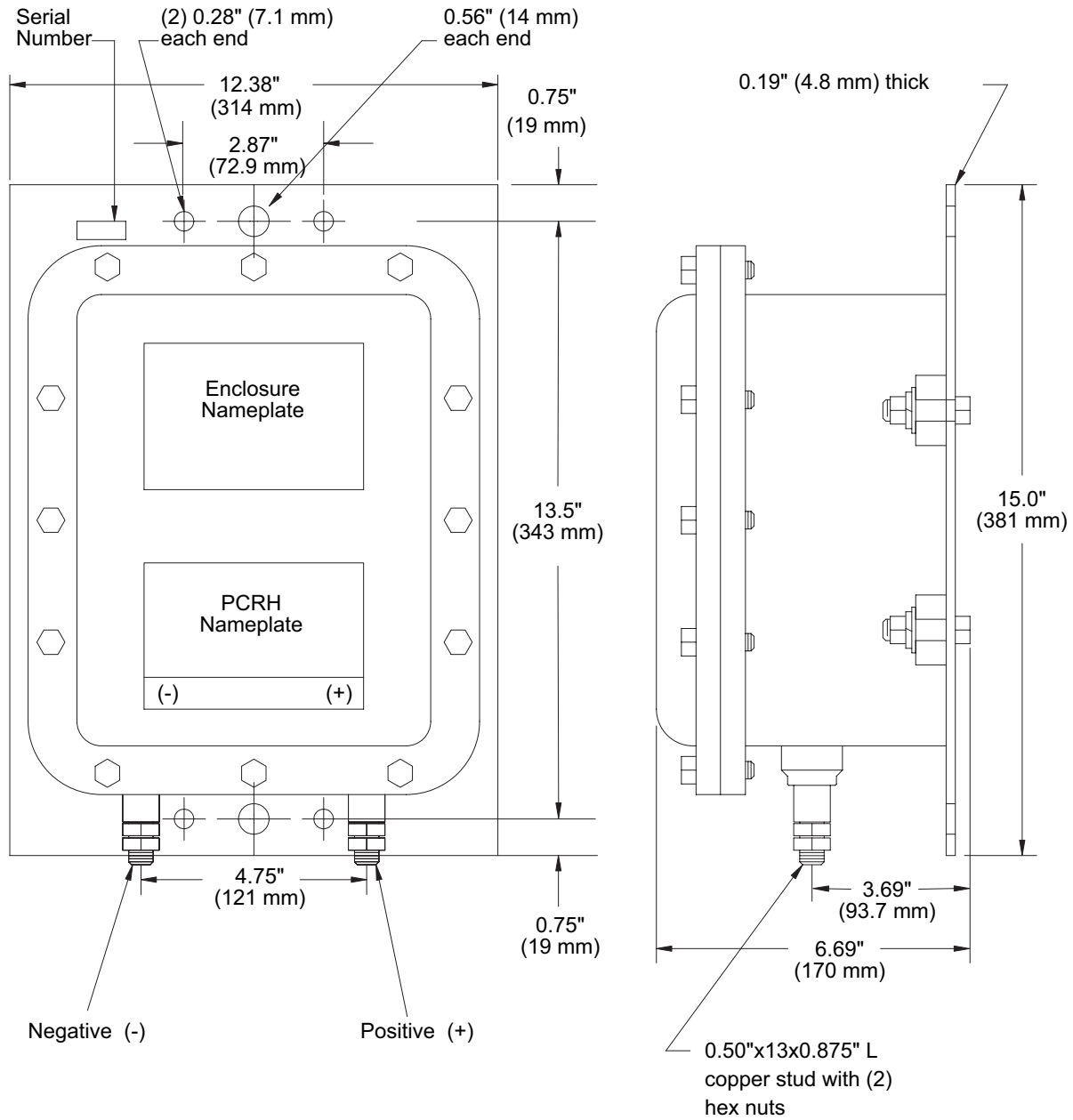


PCRH Outline Dimensions



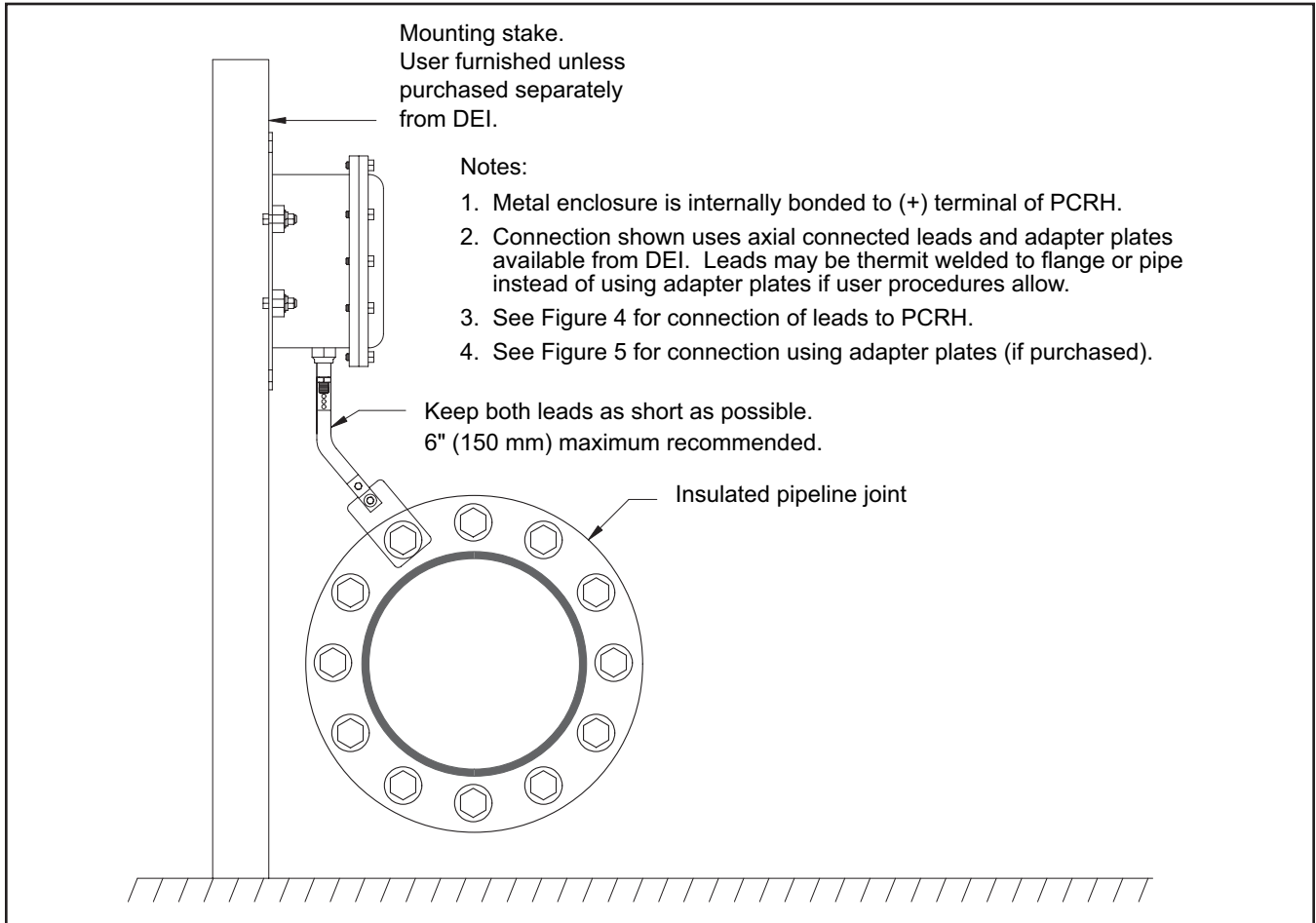
Applies to Models:
PCRH-3.7KA & PCRH-10KA @ 60 Hz
PCRH-3.5KA & PCRH-9KA @ 50 Hz

PCRH Outline Dimensions

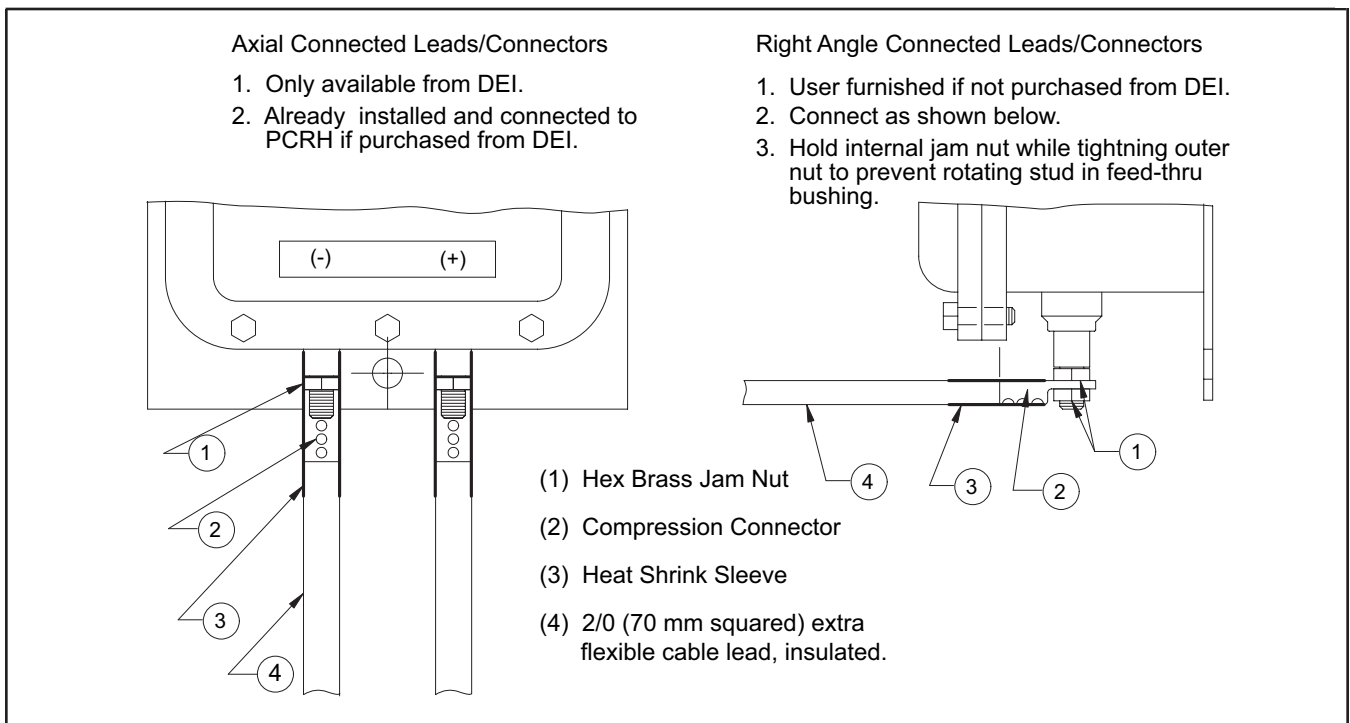


Applies to Models:
PCRH-15KA @ 60 Hz
PCRH-14KA @ 50 Hz

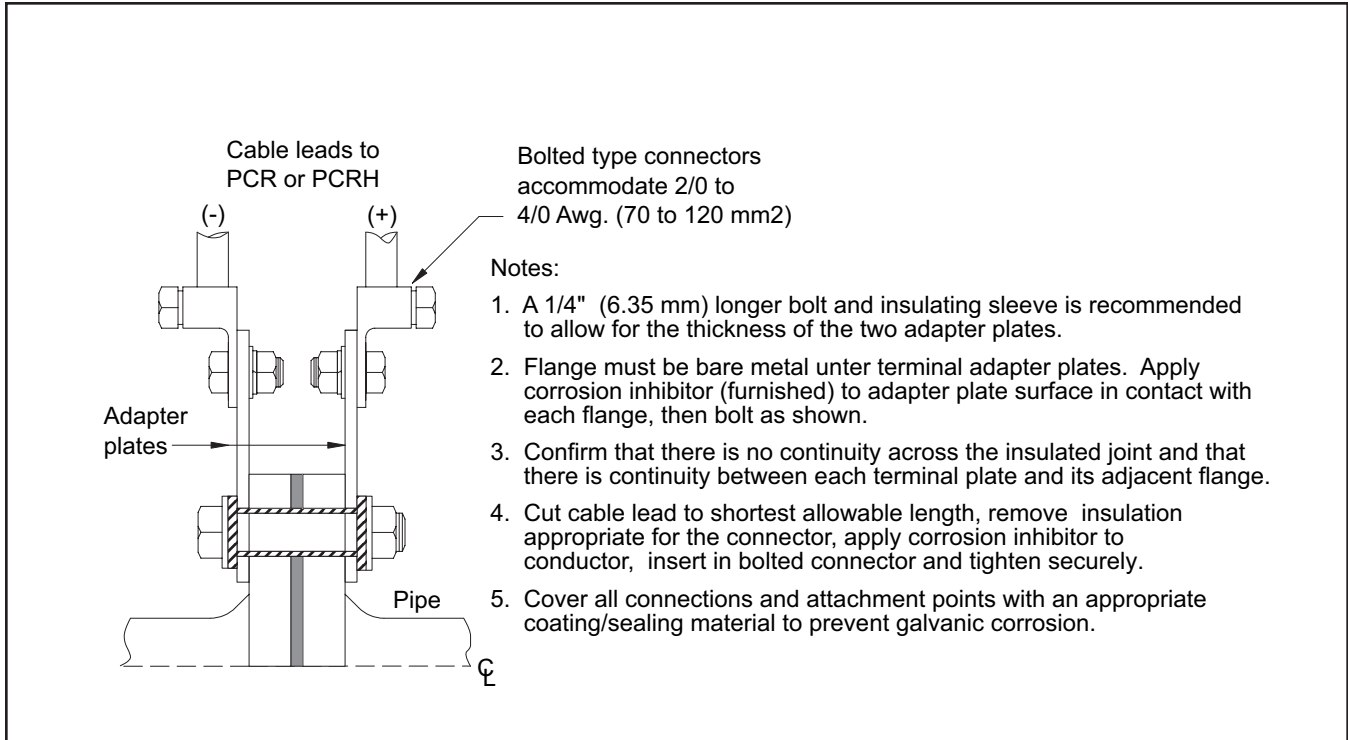
Typical Installation for Insulated Joint Protection



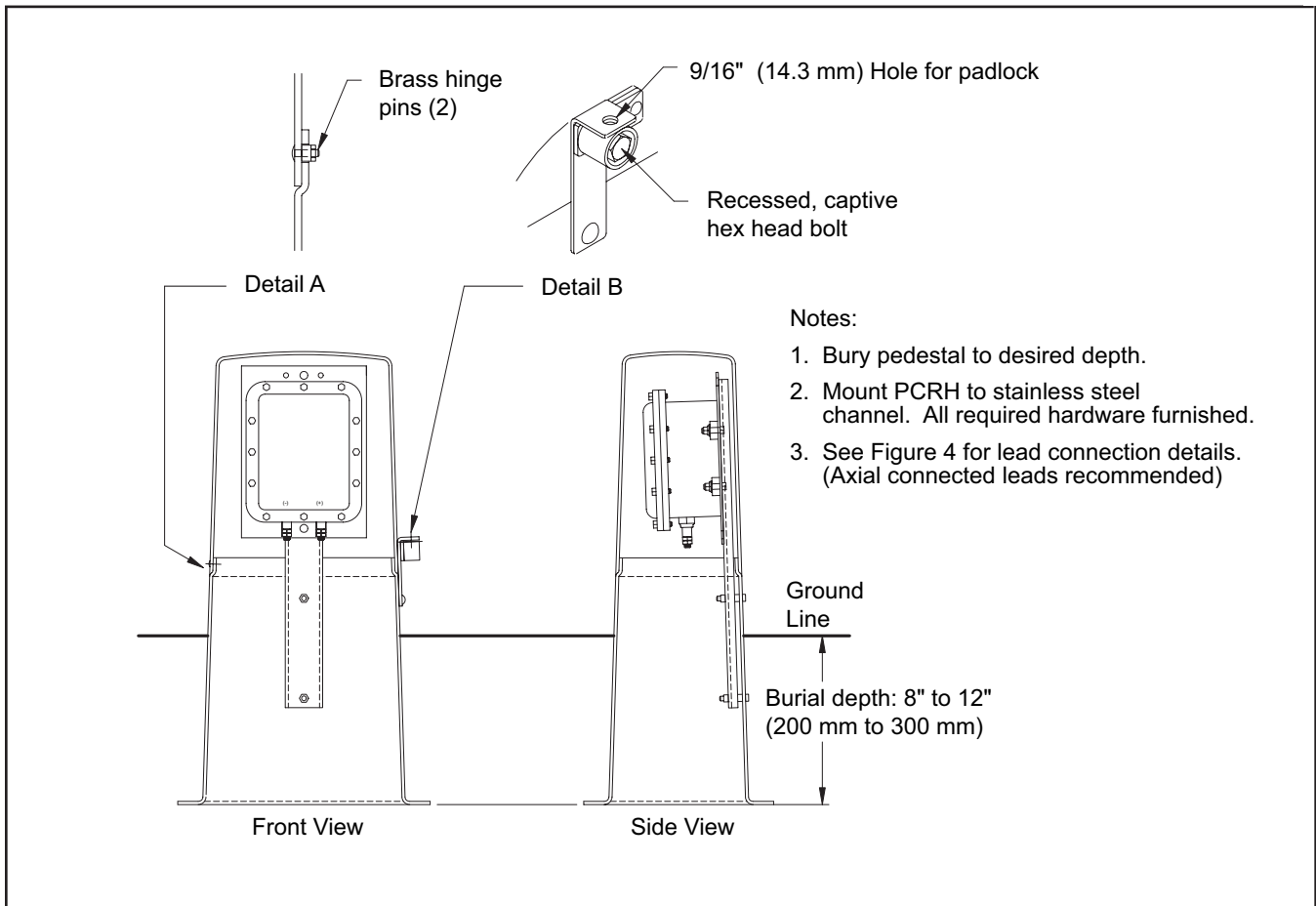
PCRH Lead Connection Options



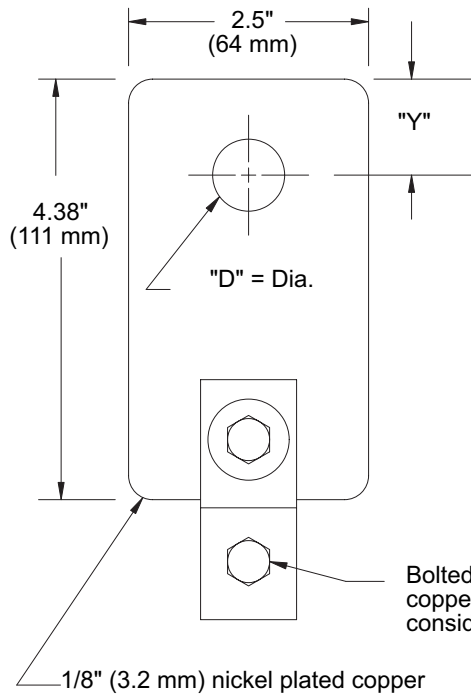
Connection to Bolted-Type Insulated Joint using Adapter Plates



PCRH Mounted in Pedestal Enclosure



Adapter Plates – PCR or PCRH



To order Adapter Plate, specify hole diameter "D" in inches or mm in the following part number: AP-"D".

(For insulated joint application, allow for the insulating sleeve diameter, if applicable.)

If Dia. "D" is:	Then "Y" is:
5/8" - 7/8" (16 mm - 22 mm)	3/4" (20 mm)
1.0" - 1-1/8" (25 mm - 29 mm)	1.0" (25 mm)
1-1/4" - 1-3/8" (32 mm - 35 mm)	1-1/4" (32 mm)

Typical Installation for AC Voltage Mitigation

