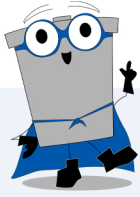


POWERHOUSEplus

Cathodic Protection Rectifier Cabinets



Meeting the Needs of Pipeline Operators and Power Companies

The Farwest POWERHOUSEplus line of rectifier cabinets is a Farwest-designed, custom-fabricated, free-standing rectifier cabinet that encloses a rectifier, shunt panel and other components that can include a remote monitor and other optional CP equipment.

This cabinet provides an all-in-one alternative to unsightly rectifier installations suspended on poles, posts or boards, especially in city environments.

The POWERHOUSEplus cabinet line features separate access points for power companies and operators.

There is a top compartment with a swing-away door for the power company to install a watt-hour meter plus a rear-access door for the power company to terminate AC power cables on the provided power buss.

A large front door allows the operator to easily access the main compartment housing the rectifier and other CP components.



Features

- Durable aluminum construction
- Powder-coated finish (available in colors)
- Separate access doors for power company and CP operator
- AC meter socket, test block and service disconnect (to meet power company needs)
- GFI AC receptacle rated for 20 amps
- Ventilation louvers
- Reversible/removable lifting eyes
- Optional shunt panel
- UL Approved

Two Sizes Available

- POWERHOUSEplus
- POWERHOUSEplusXL

Farwest CP Solutions

Farwest often provides the POWERHOUSEplus with all required CP components including the rectifier, shunt panel, RMU and other customer needs.

Eliminate Unsightly Rectifier Installations.
Order your POWERHOUSEplus today!



**FARWEST CORROSION
CONTROL COMPANY**

888.532.7937 • FarwestCorrosion.com • Headquarters: 12029 Regentview Avenue, Downey, CA 90241
Los Angeles • Bakersfield • San Francisco • Seattle • Denver • Phoenix • Tulsa • Houston • Chicago • Philadelphia

POWERHOUSEplus

POWERHOUSEplus Specifications

POWERHOUSEplus	57.18"H x 25.75"W x 19.44"D Note: Allows 1,200 watt or smaller rectifiers (Manufacturers size A)
POWERHOUSEplus XL	60.0"H X 36.0"W X 28.0"D Note: Allows 2,800 watt or smaller rectifiers (Manufacturers size B)
NEMA Rating	3R (Rain tight)
Housing Material	0.125" 5052-H32 Aluminum
Hardware Material	Stainless Steel
Finish	TGIC polyester powder coating, ASA-70 gray standard
Electrical Rating	100A at 120/240 VAC, single phase 20A single pole service disconnect with 20A duplex receptacle

POWERHOUSEplus Options

- Custom paint colors available
- Anti-graffiti finish
- Custom sizes
- Can be provided without the watt-hour meter receptacle
- Custom assembly to meet your needs

About Farwest Corrosion Control

Farwest Corrosion Control is an industry pioneer and leader in comprehensive cathodic protection and corrosion control products, services, and solutions to protect critical infrastructure in the gas, oil, water, wastewater, power, marine and construction industries. Services include product distribution and fabrication, turn-key system installation, engineering design, and technical field services. With the largest inventory nationwide, Farwest can provide same-day shipping and one-to-three-day delivery to most areas in the US.

Founded in 1956, the firm is a Minority Business Enterprise headquartered in Downey, CA. Farwest has seven regional operations, over 170 employees nationwide and is known for its outstanding reputation, quality work, technical expertise and customer trust.



Eliminate Unsightly Rectifier Installations.
Order your POWERHOUSEplus today!

Farwest Corrosion Control

888.532.7937 • FarwestCorrosion.com

Headquarters: 12029 Regentview Avenue, Downey, CA 90241

Los Angeles • Bakersfield • San Francisco • Seattle • Denver • Phoenix • Tulsa • Houston • Chicago • Philadelphia



© 2023 Farwest Corrosion Control Company. All Rights Reserved.